

TECHNICAL DATA OVERVIEW

- Color/Laser cameras and Line lasers
- LED and optic fiber lighting system
- Integrated with your choice of cross cut saw and handling systems
- Motorized press rolls (synchronized with belt speed)
- Integrated ID marking station
- Speed: 300 to 1000 ft/min (Variable)
- Profile: hardwood boards
- Board width: 2 to 10 inches
- Board thickness: ½ to 2 inches
- Thickness option: engineered flooring layer
- Infeed board length: 12 to 192 inches
- Maximum bow and crook: ½ inch from bottom
- Precision:
 - 0,22mm [0,008"] widthwise
 - 1mm [0,04"] lengthwise
 - 0,03mm [0,001"] in depth



SPECIES

- Red and White Oak
- Cherry
- Yellow Birch
- Hickory
- Walnut
- Beech
- Ash
- Maple
- Other on demand



DIFFERENTIATE YOURSELF
AS A QUALITY LEADER

Image courtesy of Mirage Floor

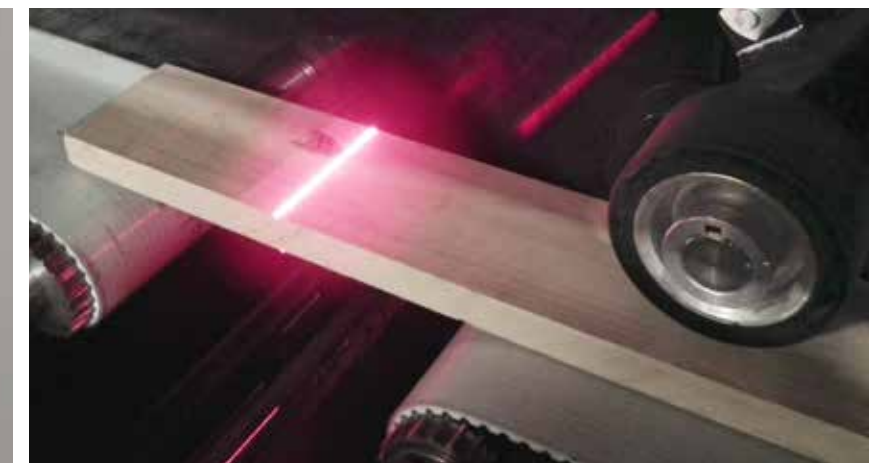
CUSTOMERS USING SPECTOR™

- Boa Franc (3 units) boa-franc.com miragefloors.com
- Appalachian Flooring (2 units) appalachianflooring.com
- Mercier Wood Flooring (2 units) mercier-wood-flooring.com
- Lauzon Flooring (2 units) lauzonflooring.com
- Premier Hardwood Flooring (4 units) premierhardwood.com
- Kennebec Lumber Maine Traditions Hardwood flooring (2 units) mainetraditionsflooring.com
- Missouri Hardwood Products (2 units) missourihardwoodproducts.com
- PG Model pgmodel.com
- Préverco preverco.com
- Wickham Hardwood flooring (2 units) wickhamhardwood.com

This list is disclaimed with customer permission.

EBI Electric

2250, 90^e Rue, Saint-Georges, Quebec G5Y 7J7
418 228-5505 | 1 888 228-5505
ebielelectric.com | info@ebielelectric.com



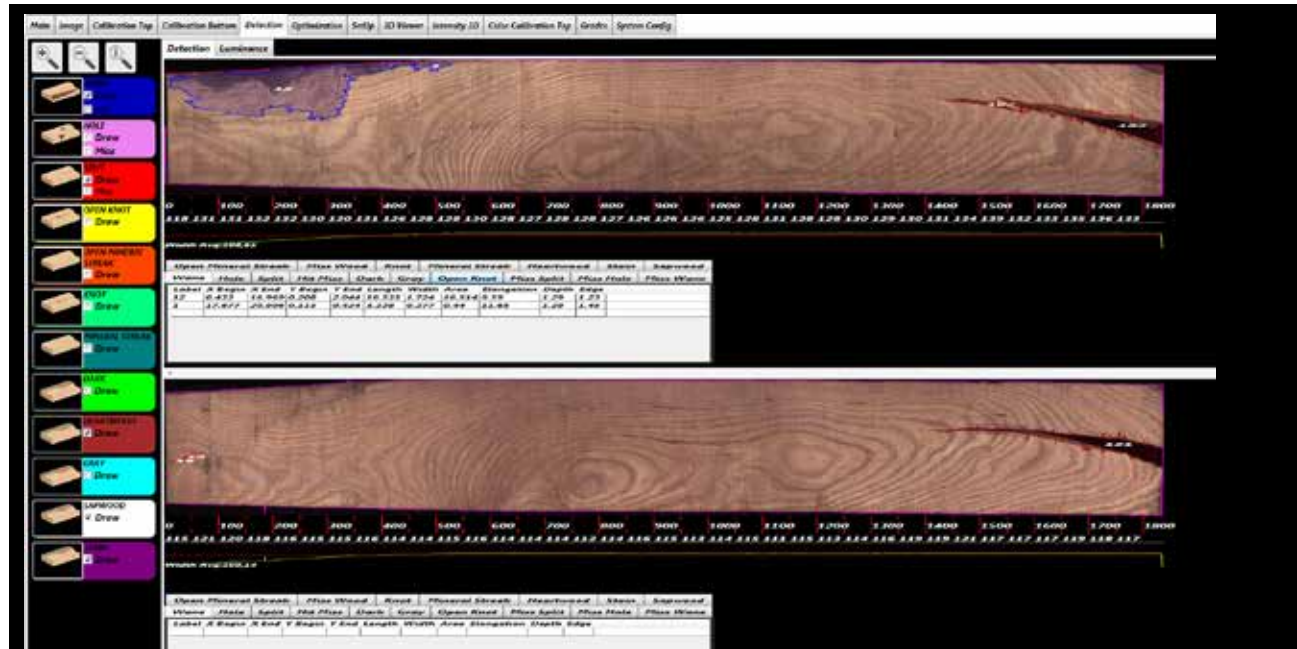
WOOD AND BOARD OPTIMIZATION SCANNER



ebielelectric.com

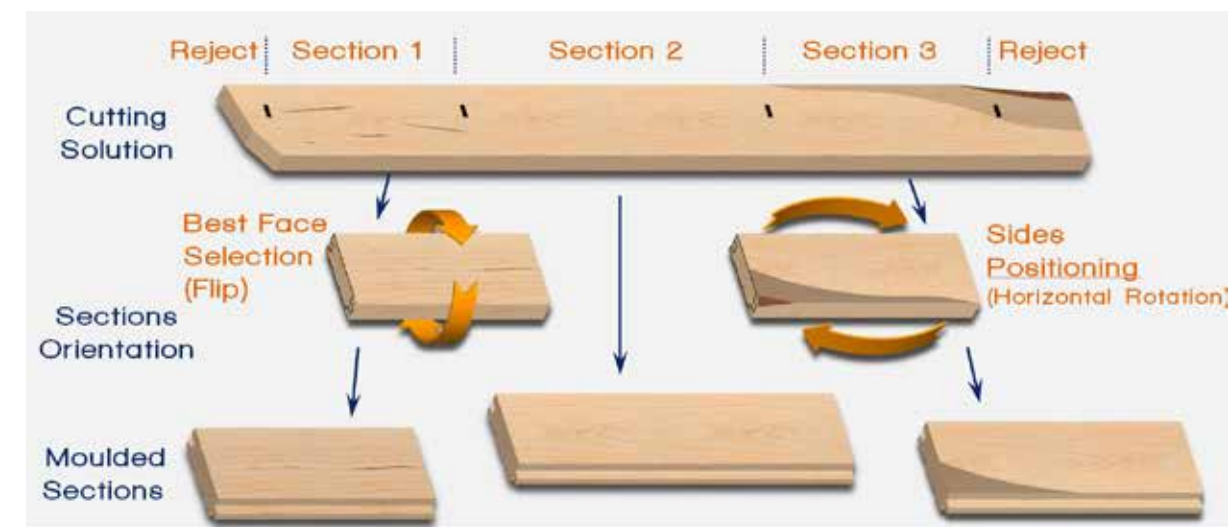
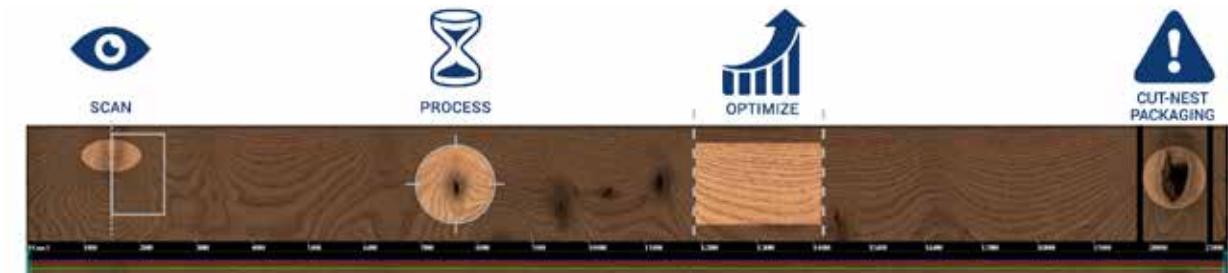
DETECTION SYSTEM

- Laser cameras: identify physical defects and characteristics on faces and sides.
- Color cameras: defect detection, color matching, color appearance and board overall color.
- Repetitive accuracy of detection over time: strong mechanic and motorized press rolls.



OPTIMIZING SYSTEM

- Optimum cut and orientation for each board according to acceptance criteria.
- Maximizes wood fiber utilization to levels impossible to reach using manual labor.
- Minimizes wood waste and handling thus increasing yield and board monetary value.
- Flexibility to adapt to market: optimization according to customer grading rules.

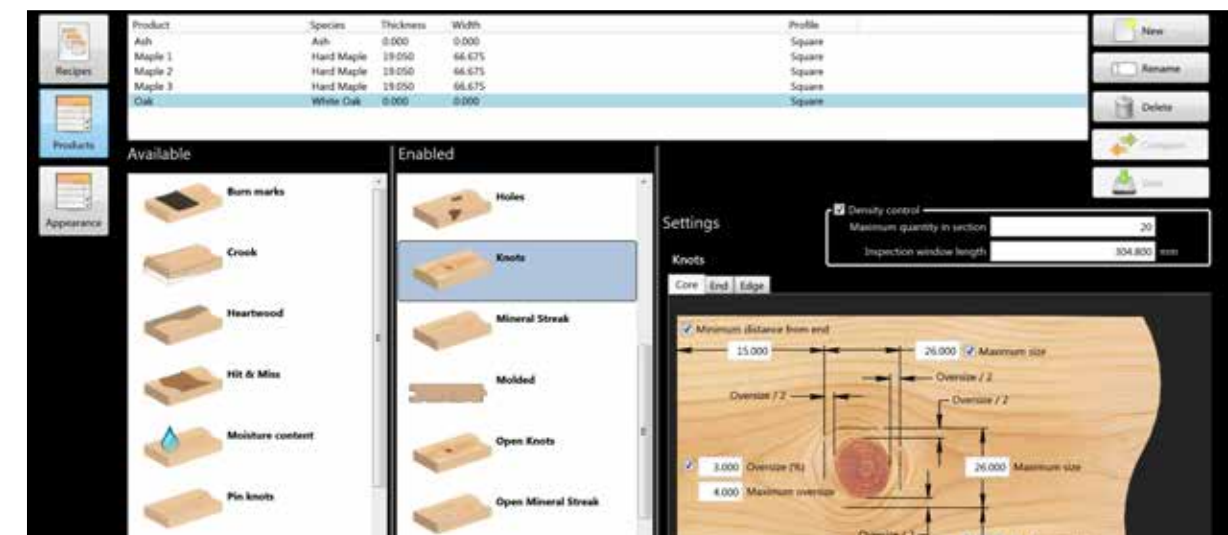


BENEFITS FOR MANUFACTURERS

- Optimum solutions (cut and orientation): maximize value of every inch of wood!
- Quality control and consistency on overall production grading distribution.
- Eliminates waste before final operation: saves energy and wood manipulation.
- Productivity improvement and reduction of skilled labor dependency.

INTERFACE AND SOFTWARE

- Flexible for engineering, quality control and production operators on a Windows® interface.
- Products flexibility: as per clients specific needs with real time data reporting.
- Simulation package: test grading rule (yield and monetary) changes without affecting production.



CHARACTERISTICS DEFECTS DETECTED

Splits, checks, holes, shakes, hit and miss, wane and specific wane depths, tear.

Tight, loose, dark, unsound, sound knots, pin knots, worm holes, bark pockets, mineral streaks.

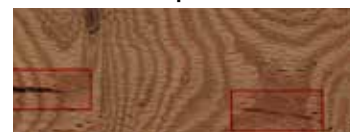
Mechanical burns, heart/sap wood, sticker stains (blue, grey, sap, tick), heat altered wood.

Crook, cup, bow, thickness deviation and thickness, width, length, end of board squareness.

Presence, position, angle and dimensions of tongue and of micro-V joint.

DEFECT AND PHYSICAL STRUCTURE

Split



Open knot



Wane



COLOR CHARACTERISTICS

Mineral streak



Stains



Machine burn

